

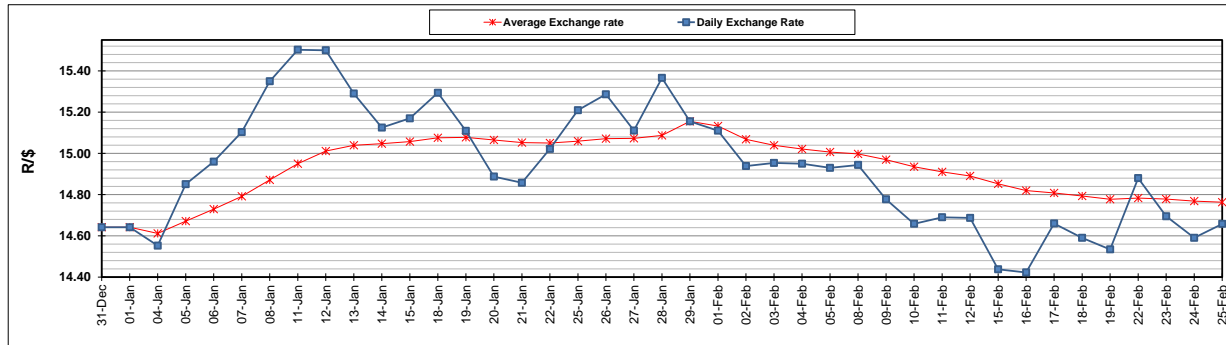
	PETROL 95 ULP	PETROL 93 ULP & LRP	DIESEL 0.05%	DIESEL 0.005%	ILL. PAR.
GAUTENG PUMP PRICE (SA c/l) AS FROM 03/02/2021	1,567.000	1,550.000	-	-	-
WHOLESALE PRICE (SA c/l) AS FROM 03/02/2021	-	-	1,358.420	1,360.820	798.688
SINGLE NATIONAL MAXIMUM RETAIL PRICE	-	-	-	-	1,008.000
BASIC FUEL PRICE - 25/02/2021 (SA c/l)	707.308	697.024	690.548	693.607	668.733
PRESS RELEASE CONTRIBUTION TO BFP 03/02/2021 - 25/02/2021 (SA c/l)	600.170	593.170	599.630	602.030	586.128
UNIT OVER/(UNDER) RECOVERY - 25/02/2021 (SA c/l)	(107.138)	(103.854)	(90.918)	(91.577)	(82.605)
AVERAGE BASIC FUEL PRICE 29/01/2021 - 25/02/2021	653.351	644.192	645.749	649.346	625.143
AVERAGE UNIT OVER/(UNDER) RECOVERY 29/01/2021 - 25/02/2021	(65.331)	(63.172)	(54.819)	(56.166)	(47.865)

ANALYSIS MOVEMENT OF AVERAGE OVER/(UNDER) RECOVERY

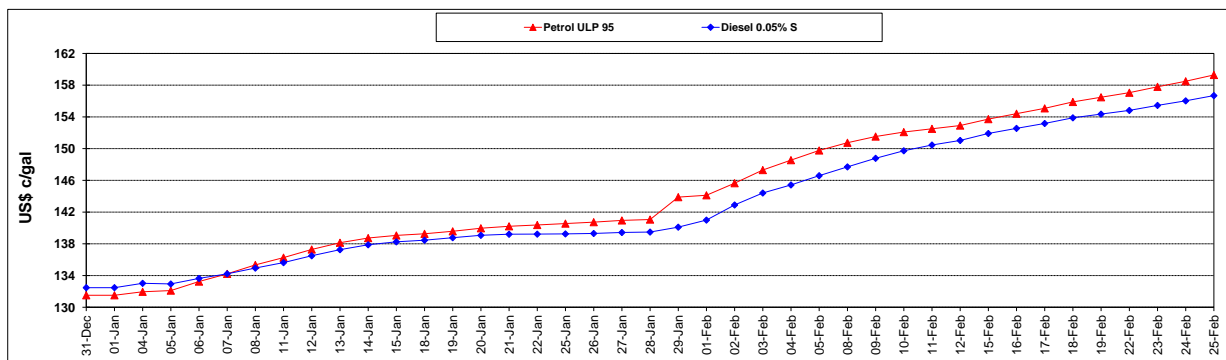
	PETROL 95	PETROL 93	DIESEL 0.05%	DIESEL 0.005%	ILL. PAR.
- MOVEMENT IN INTERNATIONAL PRODUCT PRICES	(79.674)	(77.314)	(68.995)	(70.421)	(61.589)
- MOVEMENT IN EXCHANGE RATE	14.343	14.142	14.176	14.255	13.724
AVERAGE UNIT OVER/(UNDER) RECOVERY 29/01/2021 - 25/02/2021	(65.331)	(63.172)	(54.819)	(56.166)	(47.865)

R/\$ EXCHANGE RATE - (R/\$14.6580 - 25/02/2021)

EXCHANGE RATE USED IN BASIC FUEL PRICE



INTERNATIONAL PRODUCT PRICES OF BASKET USED IN BASIC FUEL PRICE



BASIC FUEL PRICE IN SA CENTS PER LITRE

